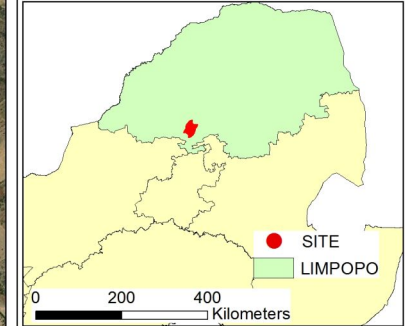


**SANRAL  
R101 ROAD UPGRADE  
SECTION 8 FROM  
BELA BELA TO MODIMOLLE**



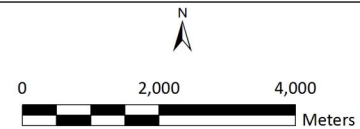
**TERRESTRIAL BIODIVERSITY  
SENSITIVITY MAP**

- Existing R101 Road
- Realignments
- Provincial Roads
- National Road

- Biodiversity Sensitivity**
- Protected Trees
  - High
  - Medium
  - Low

N.B: The Study Area for Terrestrial Biodiversity Assessment was exaggerated to a corridor of 600m at the realignment areas to obtain a holistic terrestrial biodiversity sensitivity of the area

Sources: Chief Surveyor General, The Biodiversity Company & Project Team



Projection: WGS\_84  
Author: Vukosi Mabunda (August 2021)

GladAfrica House, Hertford Office Park  
90 Bekker Road  
Midrand, 1686  
Tel: 011 312 2537  
Fax: 011 805 1950  
QMF-GE-EV-981A-16/09/2020