

SITE NOTICES PLACEMENT

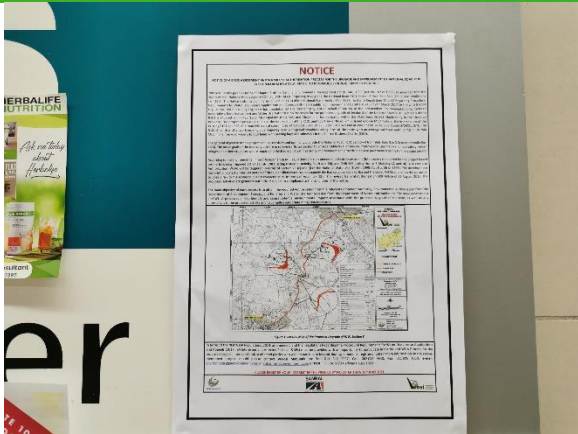
AS PART OF THE PUBLIC PARTICIPATION PROCESS FOR
THE BASIC ASSESSMENT AND WATER USE AUTHORISATION PROCESS FOR THE
PROPOSED NATIONAL ROAD R101 SECTION 8 UPGRADE
FROM BELA BELA (KM 0.0) TO MODIMOLLE (KM 26.8), LIMPOPO PROVINCE



In accordance with the NEMA (1998) EIA Regulations, 2014, as amended, a notice board detailing the proposed activity as well as the contact details of the EAP was placed on site. A2, A3 and A4 site notices presenting the project were erected on site and at visible and accessible locations close to the site on the 31st of March and 1st April 2021 at the following locations indicated on Table 1 and Figure 1.

Table 1: Placement of site notices

SITE NOTICE PLACEMENT UNDERTAKEN ON 31ST MARCH AND 1ST APRIL 2021



Checker Bela Mall

24°53'42.60"S; 28°17'40.13"E (A4)



R101. Opposite Springbok Boma Pub & Restaurant

24°51'49.87"S; 28°19'42.42"E (A2)



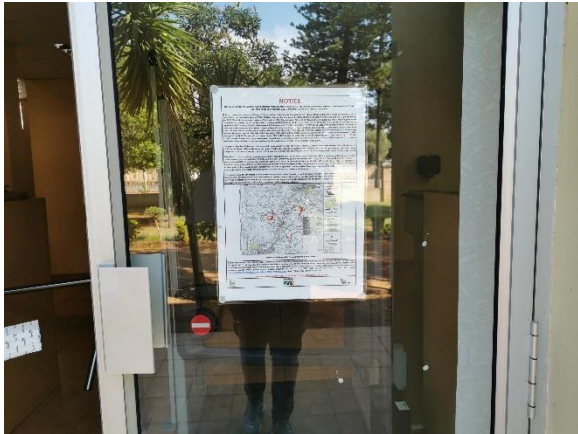
McDonalds Bela Bela

24°53'43.20"S; 28°17'46.25"E (A2)



ATKV Klein Kariba Intersection of R101 & Eersbewoond

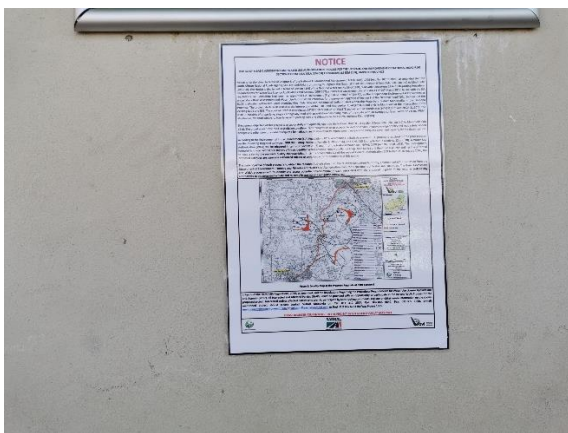
24°51'3.94"S; 28°20'10.49"E (A2)



Bela Bela Library / Municipality
24°53'4.94"S;28°17'28.24"E (A3)



Emmerentia Geldenhuys Sending Sentrum Entrance
24°50'49.21"S;28°20'18.14"E (A2)



Spar Supermarket Bela Bela Police Station
24°53'4.75"S;28°17'33.90"E (A3)



Mon Repos Guest Farm
24°49'56.27"S;28°20'37.97"E (A2)



Post Office Bela Bela
24°53'4.84"S;28°17'38.08"E (A3)



Arinel Boerdery
24°49'36.36"S;28°20'38.55"E (A2 + A3)



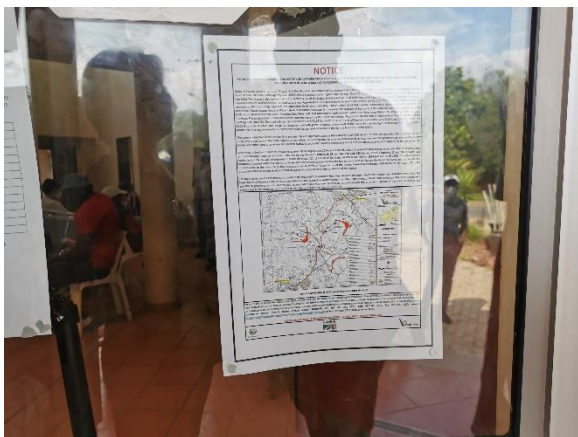
Bela Bela Police Station

24°52'42.16"S;28°17'38.09"E (A2)



R101. Bela Bela Lodge

24°48'48.98"S;28°20'39.00"E (A2)



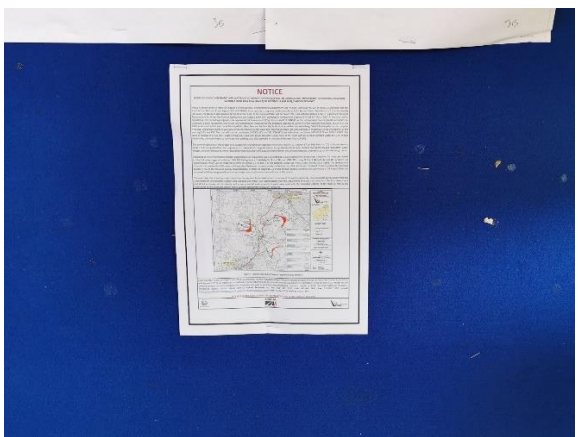
Bela Bela Traffic Department

24°52'46.24"S;28°17'41.45"E (A4)



A Cheetah Conservation Cheetah Experience

24°48'14.03"S;28°21'22.80"E (A2)



Shell Garage Bela Bela

24°53'5.56"S;28°17'54.45"E (A4)



Verloren Estates Africa

24°47'35.03"S;28°21'16.04"E (A2)



Project Start (km 0.0). Corner Chris Hani Drive & R101

24°53'5.16"S; 28°17'56.99"E (A2)



Poultry Farm

24°47'6.51"S; 28°21'16.02"E (A2)



**Jacob Zuma View Informal Settlement.
Corner R101 & Mile Street**

24°52'56.67"S; 28°18'19.73"E (A2)



**R101. Silver Rock Caravan Park & Safari Lodge
Access Gravel Road**

24°45'56.88"S; 28°20'56.91"E (A2)



Thusanang School for the Handicapped

24°52'51.51"S; 28°18'43.21"E (A4)



Theo Aries Access Gravel Road

24°45'15.76"S; 28°21'12.35"E (A2)



Jacob Zuma View Informal Settlement.
Corner Street 6 & Street 4 Street
24°52'56.12"S; 28°18'40.89"E (A2)



Intersection of Hans Campher Driveway & Strydom Street (R101) Modimolle
24°42'36.15"S; 28°23'24.09"E (A2)



Jacob Zuma View Informal Settlement / Extension
6B Bela Bela
24°52'26.38"S; 28°19'3.44"E (A2)



Intersection of Boshoff & Thabo Mbeki Drive (R101) Modimolle
24°42'21.25"S; 28°23'51.25"E (A3)



Ronwel Holiday Resort Entrance
24°52'1.67"S; 28°19'28.74"E (A2)

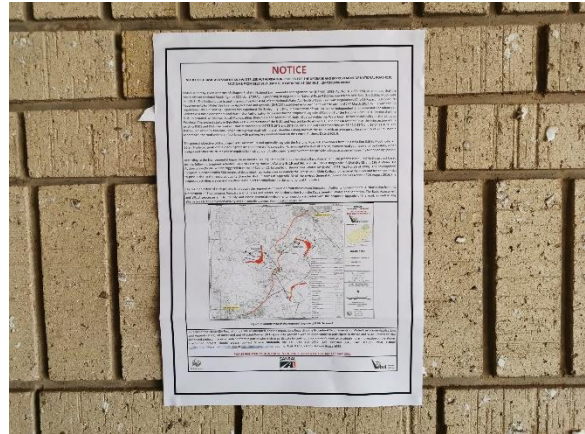


Hoerskool Nylstroom
24°42'27.92"S; 28°23'57.52"E (A3)



Nylstroom Konsentrasiekamp Kerkhof

24°42'10.79"S; 28°24'8.42"E (A3)



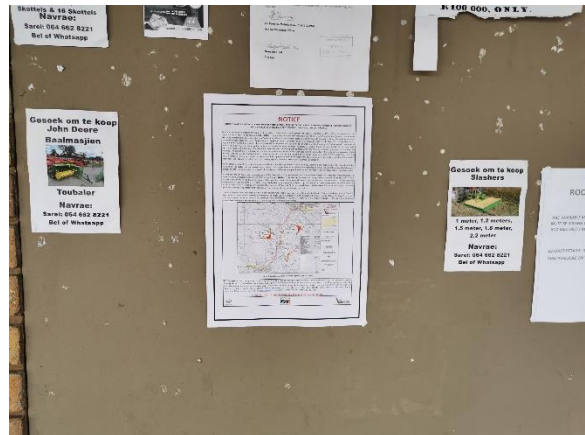
Modimolle Library

24°42'11.49"S; 28°24'24.20"E (A3)



Project End (km 26.8). Corner Thabo Mbeki Drive (R101) & Nelson Mandela Drive (R33)

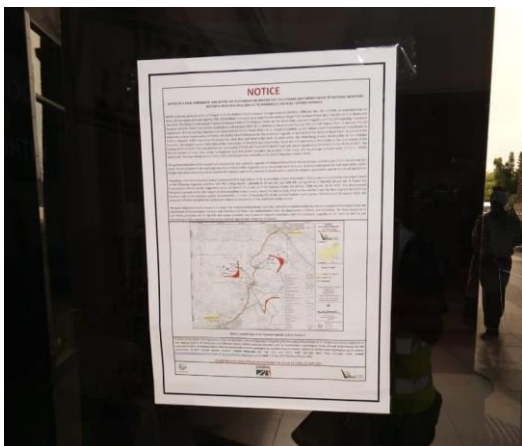
24°42'0.36"S; 28°24'20.90"E (A2)



Spar Supermarket Modimolle.

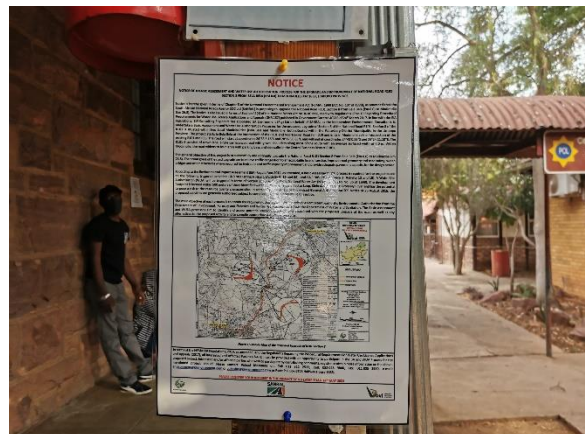
Nelson Mandela Drive, Modimolle

24°42'7.14"S; 28°24'27.96"E (A3)



Modi Mall Entrance

24°41'46.32"S; 28°24'21.89"E (A3)



Modimolle Police Station

24°42'22.93"S; 28°24'29.98"E (A3)



Modimolle Department of Transport Entrance.

Corner Limpopo Street & Hagen Street

24°41'55.20"S; 28°24'35.77"E (A3)

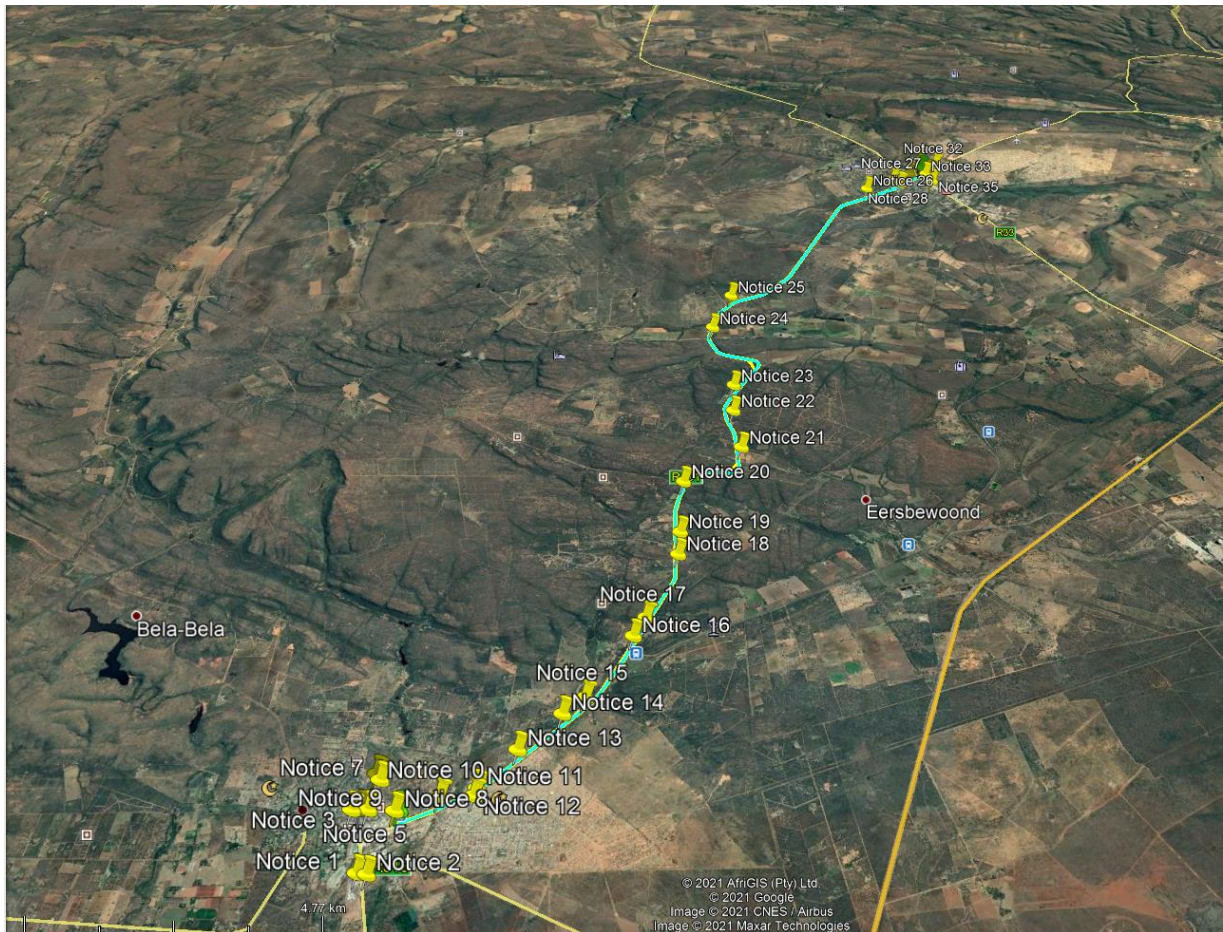


Figure 1: Location of Site Notice Boards